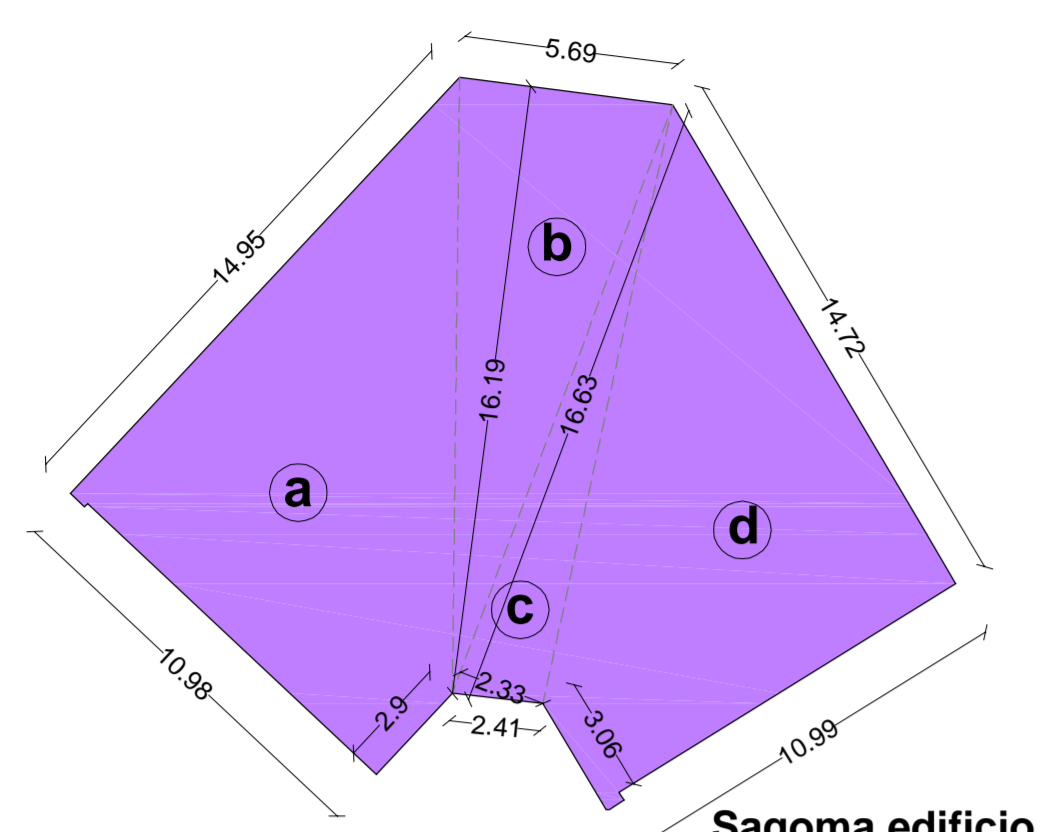
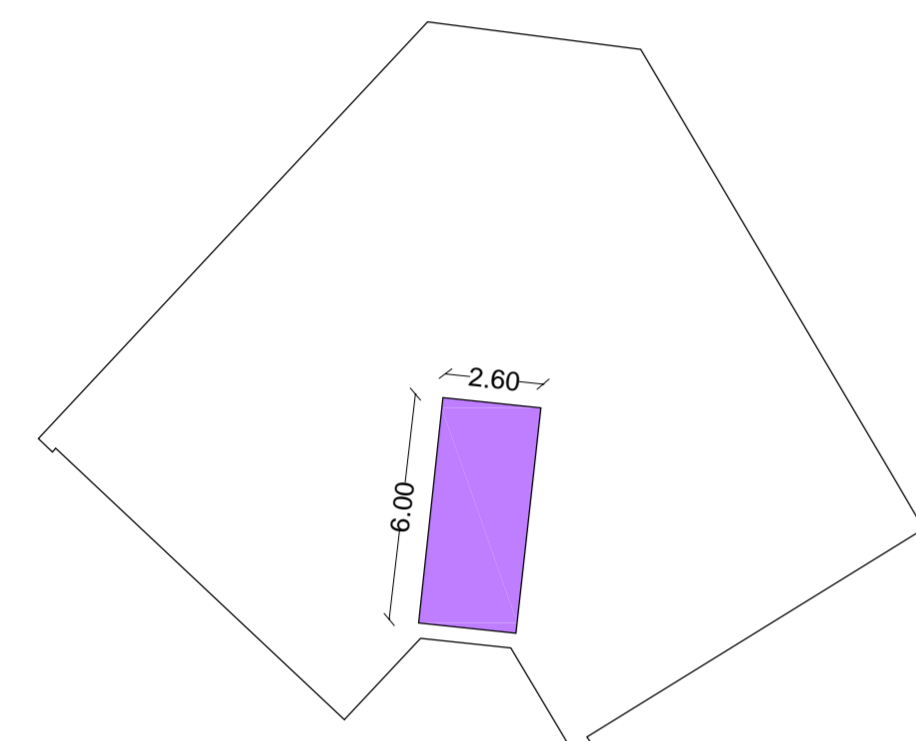


EDIFICIO TESTIMONIALE

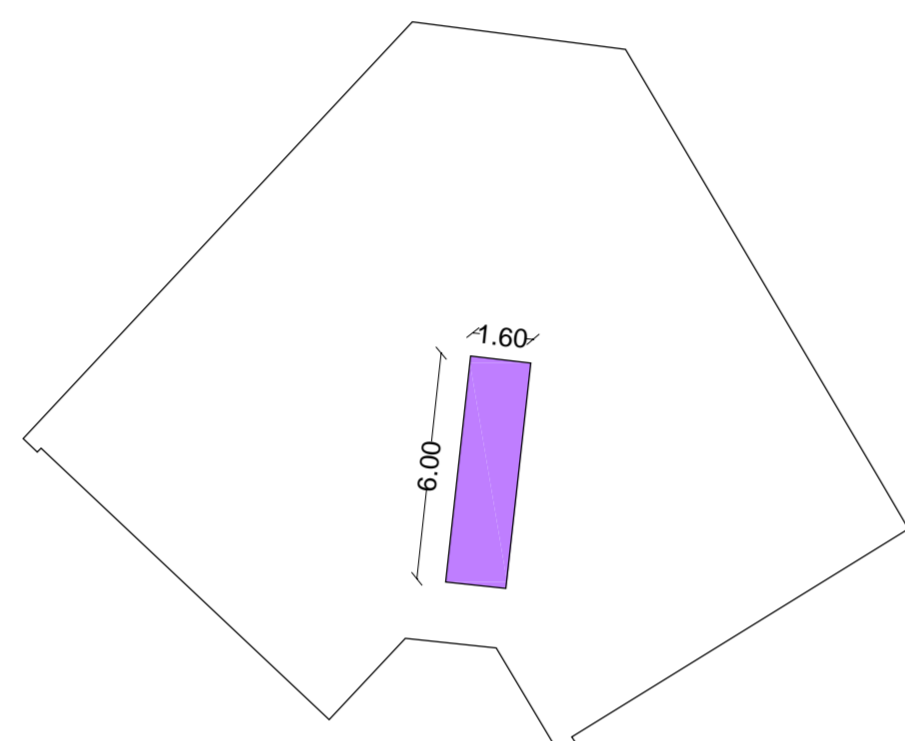


Sagoma edificio

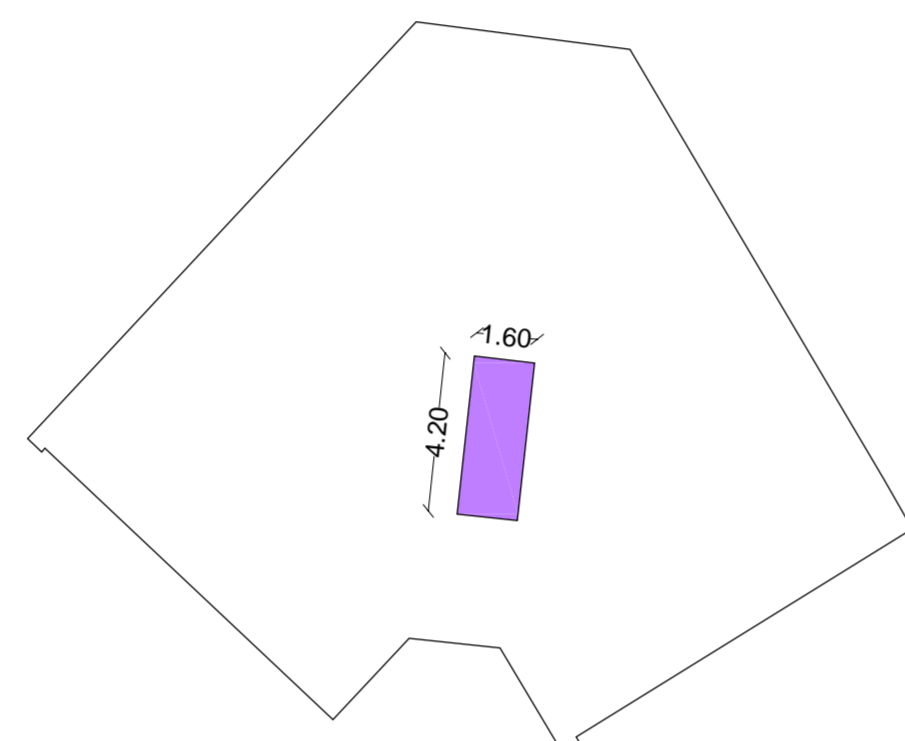
EDIFICIO TESTIMONIALE			
a	(14,95+2,95)*10,982	=	98,27
b	5,69*16,192	=	46,06
c	16,63*2,332	=	19,37
d	(14,72+3,06)*10,992	=	97,70
totale			261,41 sagoma edificio
rampa P1	2,6*6	=	15,60
rampa P2	1,6*4,2	=	6,72
totale			31,92 area scala da sottrarre
SLP	(261,41*3)/31,92	=	752,31



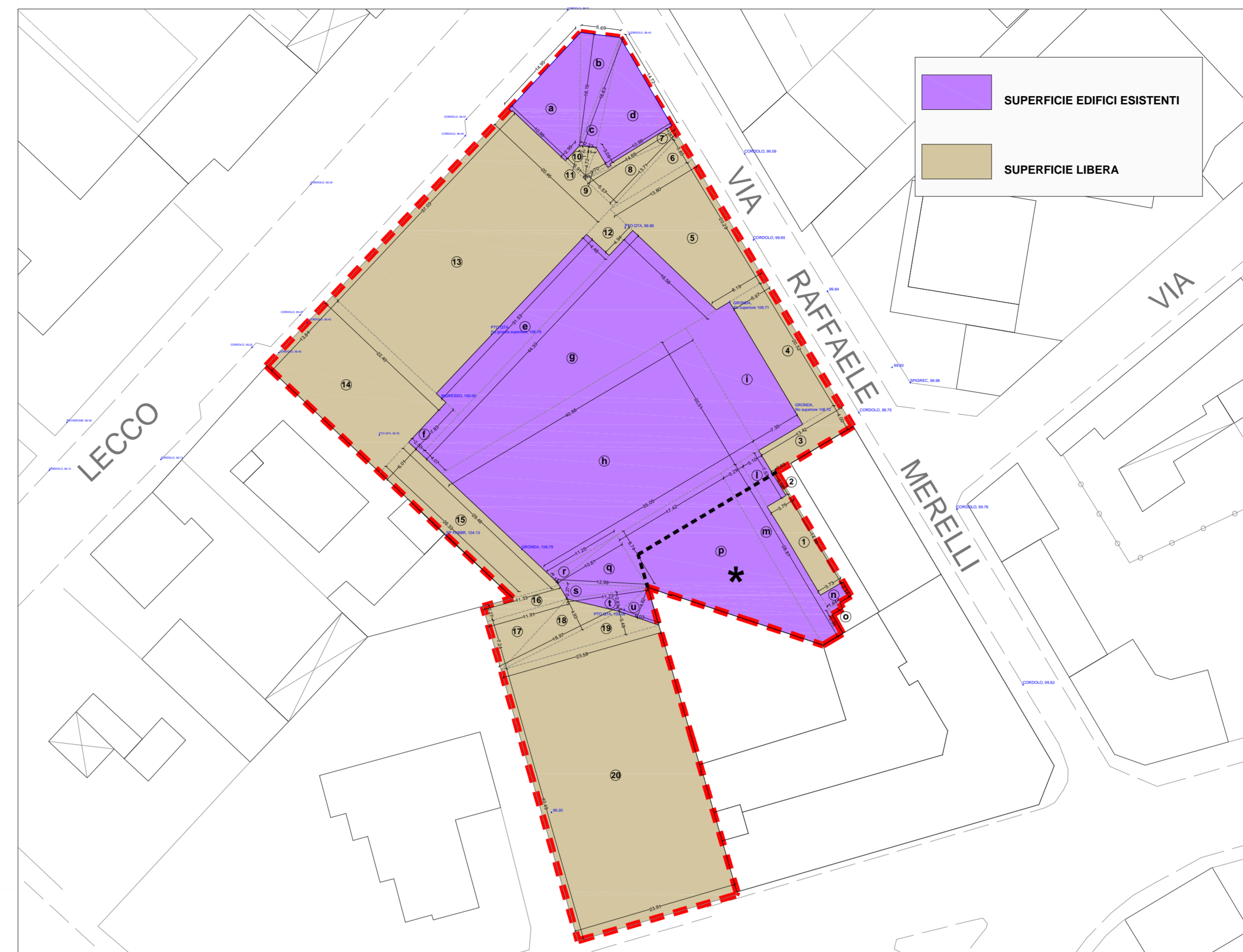
P1



P2



P3



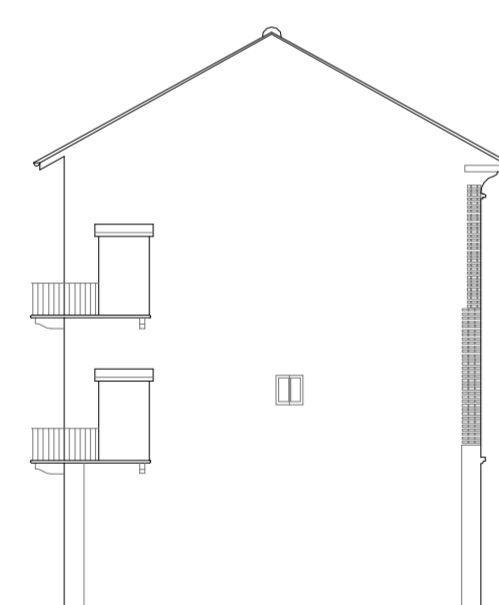
SUPERFICIE EDIFICI			
a	(14,95+2,95)*10,982	=	98,27
b	5,69*16,192	=	46,06
c	16,63*2,332	=	19,37
d	(14,72+3,06)*10,992	=	97,70
e	31,53*4,48	=	141,25
f	2,57*8,3	=	19,58
g	(16,58+4,07)*14,302	=	457,40
h	(40,58+35,05)*20,512	=	776,89
i	26,51*7,35	=	195,16
l	3,17*7,57	=	23,97
m	3,29*28,81	=	94,78
n	2,34*3,73	=	8,73
o	1,84*0,85	=	1,56
p	(28,81+8,74)*11,422	=	327,06
q	8,74*10,812	=	47,24
r	11,25*1,542	=	8,66
s	12,98*2,272	=	14,73
t	11,73*2,832	=	16,60
u	6,03*4,622	=	13,93
totale			2365,99

SUPERFICIE LIBERA			
1	14,86*3,75	=	55,73
2	0,63*3,58	=	2,26
3	13,42*4,00	=	53,68
4	20,02*9,97	=	122,90
5	(13,88+8,19)*20,292	=	223,89
6	3,85*13,892	=	26,57
7	1,87*14,692	=	13,74
8	5,57*13,712	=	38,18
9	3,06*3,72	=	5,66
10	2,41*4,722	=	5,69
11	2,95*3,912	=	5,77
12	4,48*4,94	=	22,13
13	37,03*20,46	=	757,63
14	13,84*22,40	=	310,02
15	(29,48+26,33)*6,012	=	167,71
16	(11,91+11,33)*2,272	=	26,38
17	11,91*7,242	=	43,11
18	18,97*4,932	=	46,76
19	23,58*3,482	=	41,03
20	(23,91+23,58)*40,492	=	961,44
totale			2929,06
TOTALE LOTTO			5295,05

SUPERFICIE AREA DI INTERVENTO 5295,05 mq

----- LIMITE SCHEDA AMBITO 7

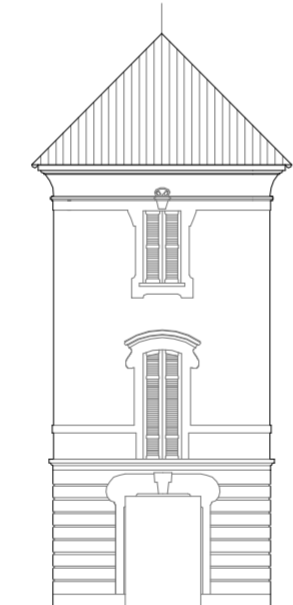
* AREA DI PROPRIETA' DEI PROPONENTI INCLUSA NELLA NUOVA PERIMETRAZIONE = 416,7 mq



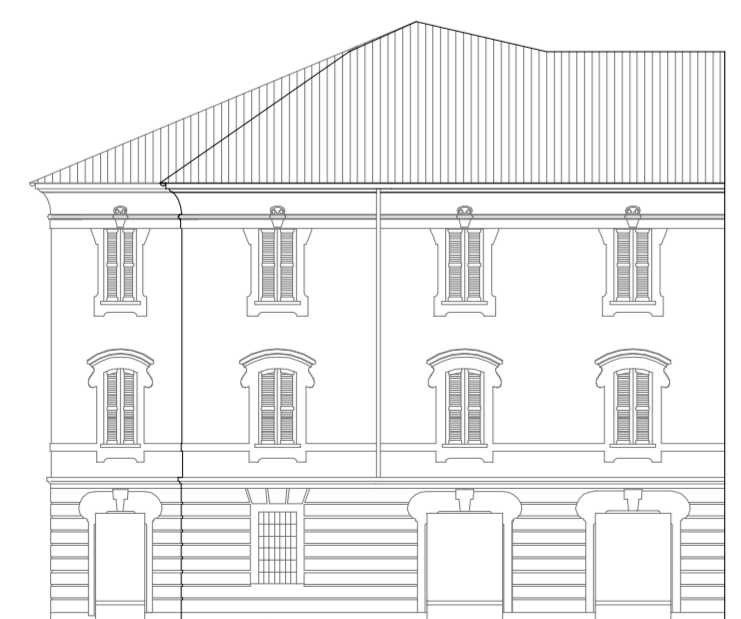
Prospetto laterale lato via Merelli



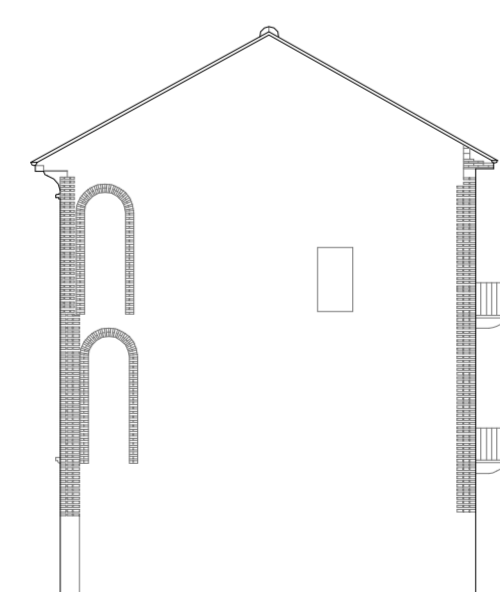
Prospetto via Raffaele Merelli



Prospetto via Lecco



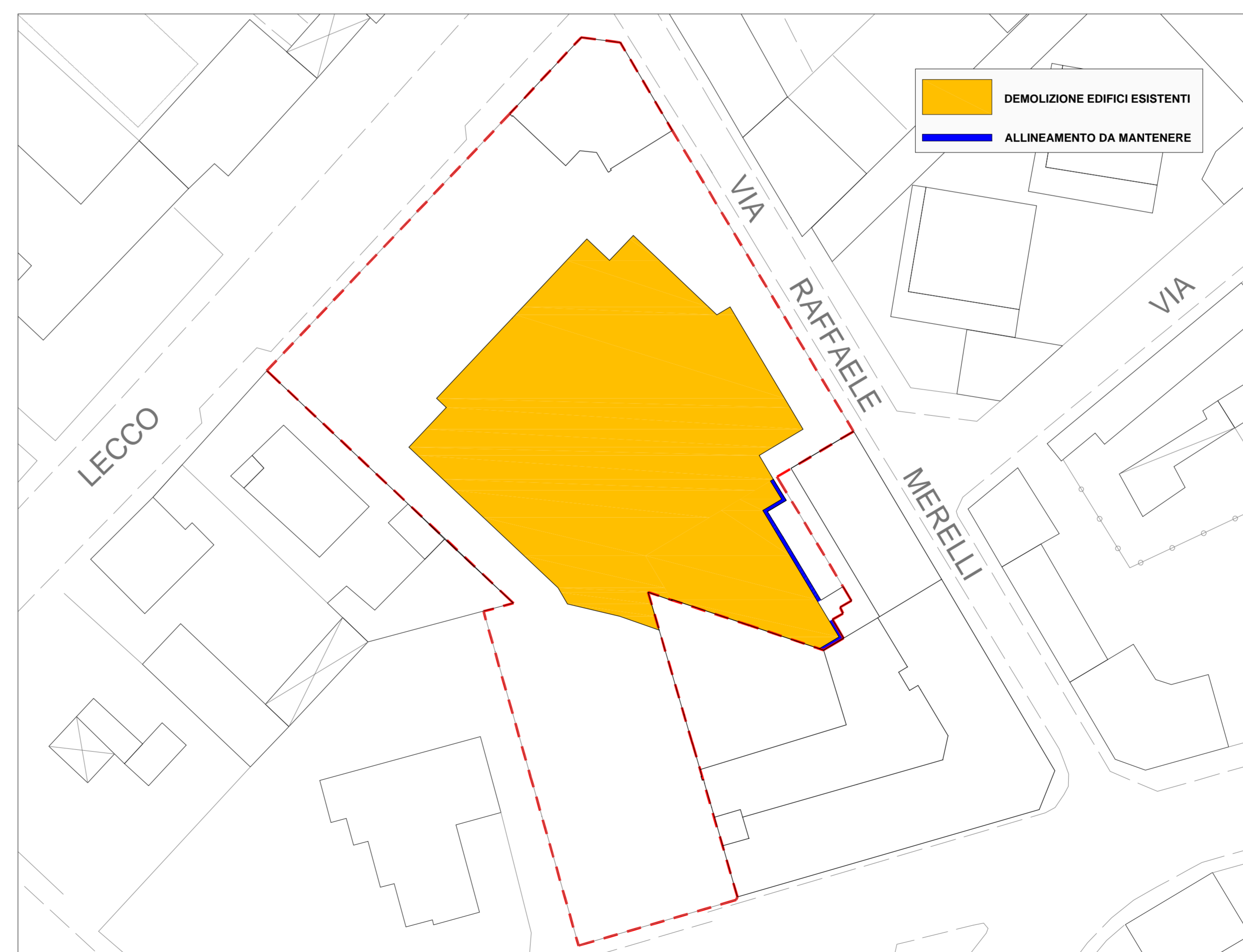
Prospetto via Lecco



Prospetto laterale lato via Lecco



Prospetto corte interna



DEMOLIZIONE EDIFICI ESISTENTI
ALLINEAMENTO DA MANTENERE

COMUNE DI MONZA

P.I.I. AMBITO 7 VIA LECCO E AREA SISTEMA VIALE LIBERTA'

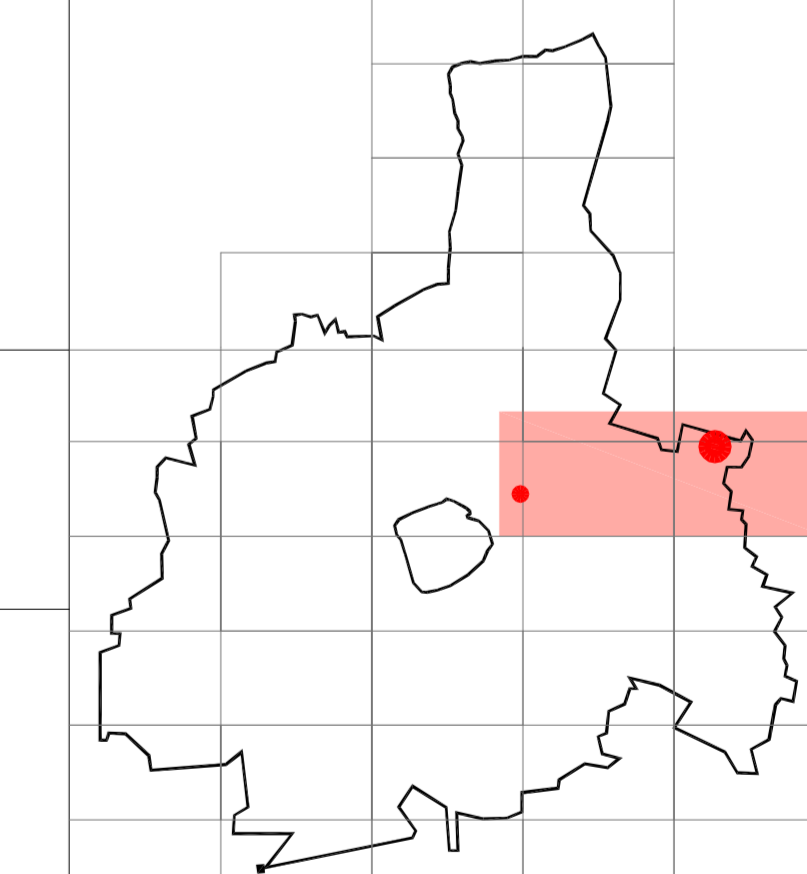
Proponente
La Villata S.p.a.
ESSELUNGA S.p.a.
CEDI S.r.l.

Coordinamento generale
studio NONIS
Via Schevano 12 - 20143 Milano
tel. 02.89191311
e-mail: nonisarch@nonisarch.it

Progettisti:
Architettura - Urbanistica
studio NONIS
Arch. Fabio Nonis
studio BERTANI
Ing. Claudio Bertani

Progettisti:
Viabilità - Urbanizzazioni
TRM CIVIL DESIGN srl
Ing. Michele Rossi
TRM ENGINEERING srl
Ing. Michele Rossi

Progettisti:
Tecnologia - ambiente - Urbanizzazioni
PLANNING S.r.l.
Ing. Gianluigi Marazzi



VIA LECCO - RILIEVO PLANIMETRICO TERRENO ED EDIFICI ESISTENTI CALCOLO SUPERFICIE

Tav. **A4a**

scala 1:500 / 200	data 11/10/2012
revisioni	data
	data
	data